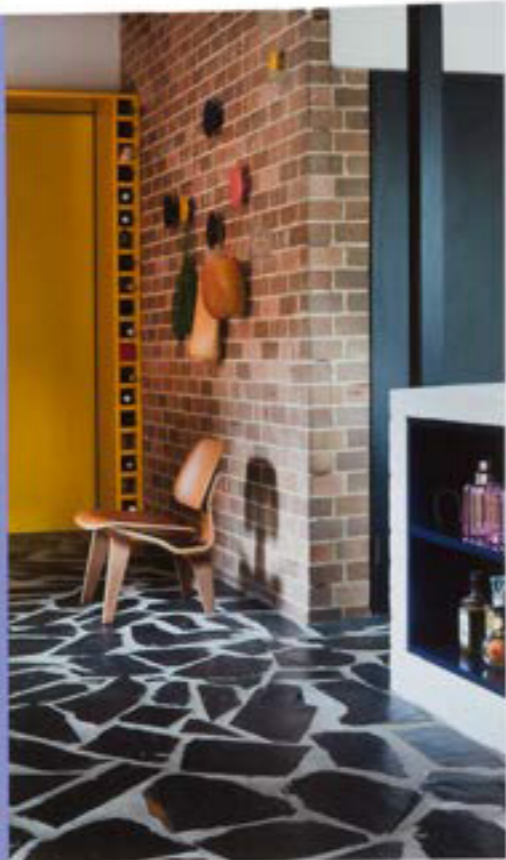


THE HOUSE OF GLAM

LUSH
INTERIORS
&
DESIGN
EXTRAVAGANZA

gestalten





♦ ♦ ♦
POLYCHROME HOUSE
SYDNEY, AUSTRALIA
DESIGNER AMBER ROAD DESIGN

134

REKINDLING THAT 1960S VIBE

A subtle reworking of a 1960s beachside home, Polychrome House is a happy meeting of architecture, art, and design. Located in the Cronulla suburb of Sydney, it is the work of Amber Road Design, headed by sisters Katy Svalbe and Yasmine Ghoniem. The main thrust of the refurbishment was to extend the ground floor to align with a balcony on the floor above. The kitchen was also moved from up- to downstairs, and works with an unconventional layout that sees a brick plinth function as lounge seating, cooking island, and open liquor display all in one. The effect of this was to shift the whole focus of the home, allowing the social spaces to take center stage. Upstairs, what had been the kitchen was remodeled as a study with a mezzanine-level guest room and en suite, essentially upgrading the house from a two to a three bed.

The greatest triumph in this refurbishment lies in the collaboration with Lymesmith, a design practice founded by Sonia van de Haar that works specifically with color within the architectural environment. Under van de Haar's direction, Amber Road Design kept the original exposed brickwork that is so much a part of the original 1960s home, and layered a bold, primary color palette throughout the ground floor, described by co-director Yasmine Ghoniem as "the heartbeat of the 'joyful' experience we were all committed to creating." To complement this, Lymesmith produced abstract artworks for the walls, loosely resembling aerial views of the surrounding terrain. In a conscious effort to maintain the 1960s vibe, the architects finished the decor with a rugged, almost jet black crazy paving that covers the entire ground floor inside and out. ♦

