

# SITCHU.

LIVING



LIVE | SHOP | EAT | DRINK | STAY | PLAY

[sit chu.com.au](http://sit chu.com.au)



08

## SITCHU.

### EDITOR-IN-CHIEF

Holly Perks

### CONTRIBUTORS

Emma Bishop

Jayde Malifa

Lucy Bell Bird

Madeleine King

Margaret Quilter

### GRAPHIC DESIGN

Identity Marketing

### EDITORIAL, PARTNERSHIPS & ADVERTISING ENQUIRIES

hello@sitчу.com

*Connect with us*

### Instagram

@sitчу.sydney @sitчу.melbourne

@sitчу.brisbane @sitчу.adelaide

@sitчу.canberra @sitчу.perth

### Facebook

sitchusydney | sitchumelbourne

sitchubrisbane | sitchuadelaide

sitchucanberra | sitchuperth

### Pinterest

@sitчуau

© Sitчу 2022

*Sitчу Living Magazine has taken constant care to make sure that content is accurate on the date of publication. The views expressed in the articles reflect the author(s) opinions and do not necessarily reflect the views of the publisher and editor. The published material, adverts, editorials and all other content is published in a good faith. Sitчу Living Magazine cannot guarantee and accepts no liability for any loss or damage of any kind caused by this publication and errors and for the accuracy of claims made by the advertisers.*

### COVER PHOTOGRAPHY:

**Interior Design:** Yasmine Saleh Ghoniem (YSG) @ysg.studio

**Styling:** Felicity Ng

**Photography:** Prue Ruscoe @prueruscoe



06



02

Winter is almost over, and we are ready to embrace the warmer weather by opting for alfresco dining, weekend road trips, colourful home decor and making the most of the sunny days.

To reflect these positive vibes, we tour a beautifully vibrant home in Sydney's Walsh Bay that takes inspiration from art. From there, we head to Beecroft in Sydney's north west to see why the locals love this community-minded neighbourhood.

For those thinking of selling, we show you how finding the right agent can help you get the best price for your home.

Enjoy the issue.

*Holly*

Editor-in-Chief  
HOLLY PERKS

## Contents

### 02 A WORK OF ART

Splashes of colour, culture and design transform this waterfront apartment into a work of art.

### 05 SHOP THE STYLE

Embrace unique forms and contrasting textures in our edit inspired by YSG's Crane In The Sky home.

### 06 BEAUTIFULLY GREEN BEECROFT

Quiet, convenient and packed full of family goodness, Beecroft ticks all the right boxes when it comes to life in the suburbs.

### 08 HOW TO FIND THE RIGHT AGENT TO ACE YOUR SPRING SALE

One of the most critical aspects of a successful sale is listing with the right agent. There might be lots of agents in your area, but how do you choose the right one?

### 10 LOCAL ESCAPES

Head to Australia's most sought-after holiday destinations right in our own backyard.

### 12 LUXURY LIFESTYLE AT YOUR FINGERTIPS

An exclusive look at luxury properties from around the globe, brought to you by Luxury Portfolio International.

### 17 PROPERTY GUIDE

Discover beautiful properties currently available to buy throughout Australia.



# A Work of Art

---

Splashes of colour, culture and design transform this waterfront apartment into a work of art.



“

“The art and collectables in this penthouse are as diverse and eclectic as the couple who lives there.”

– Yasmine Saleh Ghoniem



Rich with memories of adventure and collectable artwork, a dated three-bedroom 90s penthouse on the Finger Wharf in Sydney's Walsh Bay has been reimagined into a vibrant space, taking you on a sensual journey.

Sydney-based interior designer and founder of YSG, Yasmine Saleh Ghoniem, was given a brief to convert three bedrooms into a two-bedroom apartment plus a home office and create an open-plan living area. The colour scheme throughout the apartment was critical - it had to complement their prized art pieces and new selections, with strictly no beige or white furniture.

“They wanted to transform their 90s penthouse from a dark, compartmentalised corporate cavern into a light, open space that enhanced the harbour views and showcased their art collection and fascination with foreign cultures,” explains Yasmine. “The dark base palette was flipped from enclosing charcoal shades (including walls, carpets and joinery) with jarring red feature walls to a neutral canvas that we sprinkled with big dollops of colour, exquisite textiles from China, Japan and Europe, plus intriguing textures.”

Yasmine reconfigured the main living room, removing obtrusive walls and decorative timber columns. Storage was recessed where possible to create the illusion of more space in what became an open-plan living area bathed in natural light.

“The art and collectables in this penthouse are as diverse and eclectic as the couple who lives there,” says Yasmine. “Comfort was key to selecting all the soft furnishings, but the project proves that playful choices can complement the sophisticated design, infusing it with palpable energy and a highly personalised free spirit.”

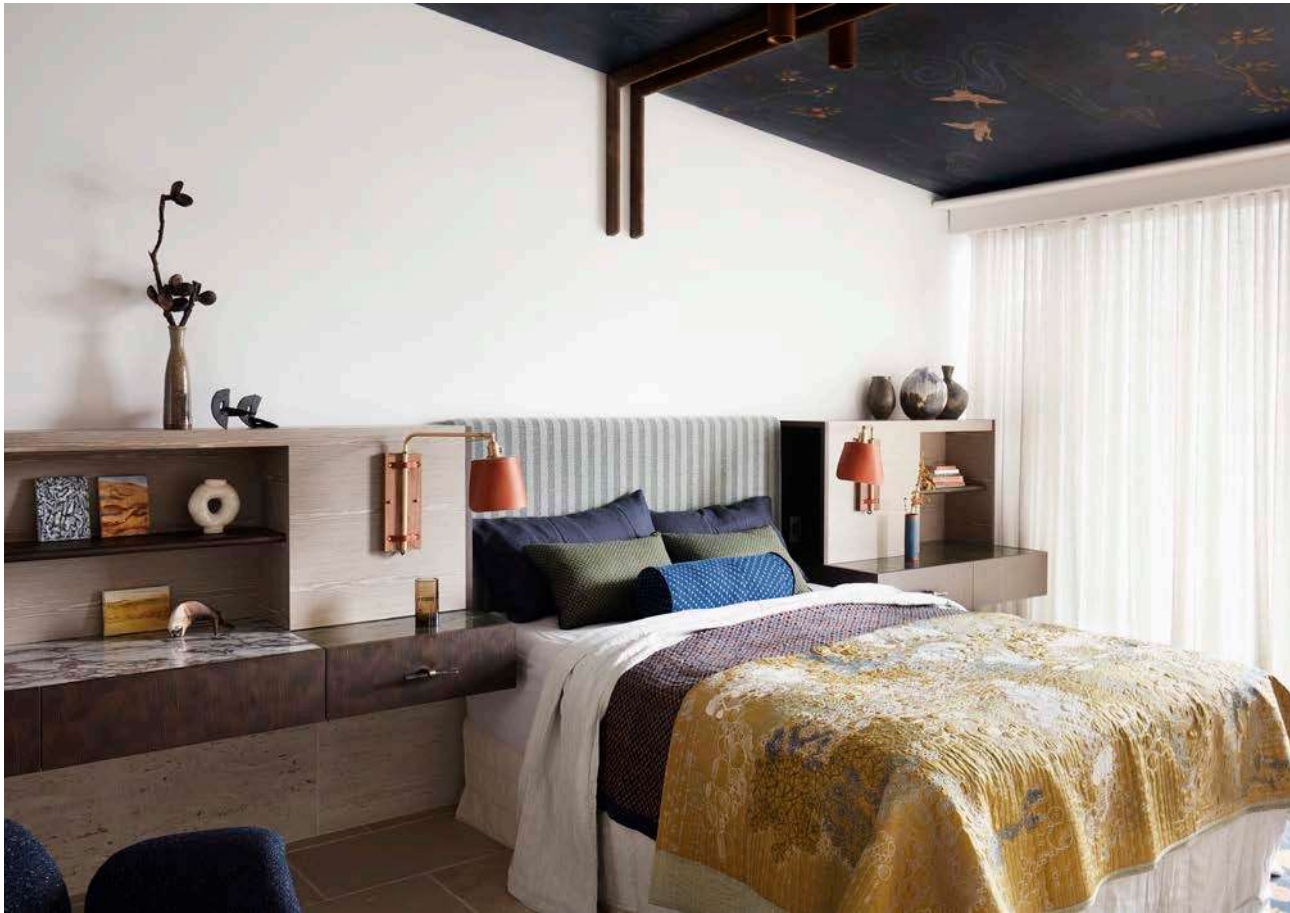
At first glance, it may seem that there are a lot of different elements at work - but look a little closer, and only two key materials were used throughout; stone and wood. Yasmine made the most of different finishes, such as custom calibrated baton joinery in the bar area or the bar's dramatic zebra veneer.

Yet, it's the conversational furnishing and art, and how they all sit in harmony with one another, that ties this inner-city apartment together. In the dining area, where plump, cartoon-like dining chairs by Poltrona Frau, the vertical candy-striped 'beach' balls sit beautifully against the Warlimpirrnga Tjapaljarri painting that hangs directly behind.

The kitchen's sexy vintage Sella Piccolo hand-blown Murano glass chandelier has a sculptural purpose. At night, its golden champagne tones zing. Then there's the candy pink Vola kitchen tapware, and the stacked crocodile green Vitoria Regia marble along the kitchen benchtop was inspired by Jenga blocks.

“This fantasy-like frivolity continues within the guest bedroom where a shell-like plaster light in the style of Jean Charles Moreux delicately hovers. The curtains and an integrated upholstered bedhead with side panels in a textured hand-stitched Pierre Frey fabric inject the room with multi-cultural references,” says Yasmine.





The multi-cultural references and unique design pieces also filter throughout the primary bedroom.

“The hand-painted ceiling feature was inspired by ancient Chinese folding screens with a walnut timber batten bracing, subtly acknowledging their framing device nestled at right angles above the bed. Swirling around it, a waterscape of lilies and pond ripples expand the room’s depth, inverting the water views beyond the balcony. On the bed, a golden Japanese vintage silk quilt glows with a beautiful golden shimmer in the daytime,” she says.

The playfulness of the interiors lights up the space, creating inspired energy that truly feels like anything is possible.

“I love how the curved furnishings give the fluid spaces harmonising embraces, while exquisite printed and woven fabrics, gutsy stone selections and zebra-patterned timber accents accelerate its energy. There’s an eternal optimism that practically sings the moment you set foot inside,” says Yasmine.

**Interior design:** Yasmine Saleh Ghoniem (YSG) @ysg.studio

**Styling:** Felicity Ng

**Photography:** Prue Ruscoe @prueruscoe

**Words:** Margaret Quilter @inky.content

# Shop the Style

THE POPS OF COLOUR SPRINKLED AROUND THE HOME ARE GROUNDED BY THE VARIETY OF RICH, TEXTURED MATERIALS MAKING THIS HOME FEEL BOTH ALIVE WITH PATTERN YET EFFORTLESSLY TRANQUIL.



- 1.** Two Wave Glasses, Smoke, Faç ek, \$79.00. **2.** Filigrana Cylinder, Pendant Light, Living Edge, \$1,190.00. **3.** Imogen Armchair, Russian Sage, Brosa, \$599.00. **4.** Ripple Ceramic Vase, Gold, Miss One, \$80.00. **5.** Fragilis Bowl, Menu, Trit House, \$180.00. **6.** Strut Dining Chair, Rose, Fenton and Fenton, \$550.00. **7.** Terracotta Jug, Single Handle, Natural, Bisque Traders, \$292.00. **8.** Ngoi Vase, Natural, RJ Living, \$19.00. **9.** Binga Palm Botonga Basket, Temple and Webster, \$84.00. **10.** Maci Velvet Round Arm Curved Sofa, 3-Seater Sofa, Dark Blue, Luxxi Home, \$4,124.00. **11.** Ainsley Wool Shag Rug, Wine Red, Brosa, \$874.00-\$2,199.00. **12.** Mateo Side Table, Nero Black, Brosa, \$349.00. **13.** Casa Linen Cushion, Pickle Multi, Living By Design, \$79.99. **14.** Bowler Side Table, Pale Brown, Hay Shop, \$525.00.