

The owners of this stately Art Deco apartment asked YSG Studio



to make it feel larger and infinitely more elevated.

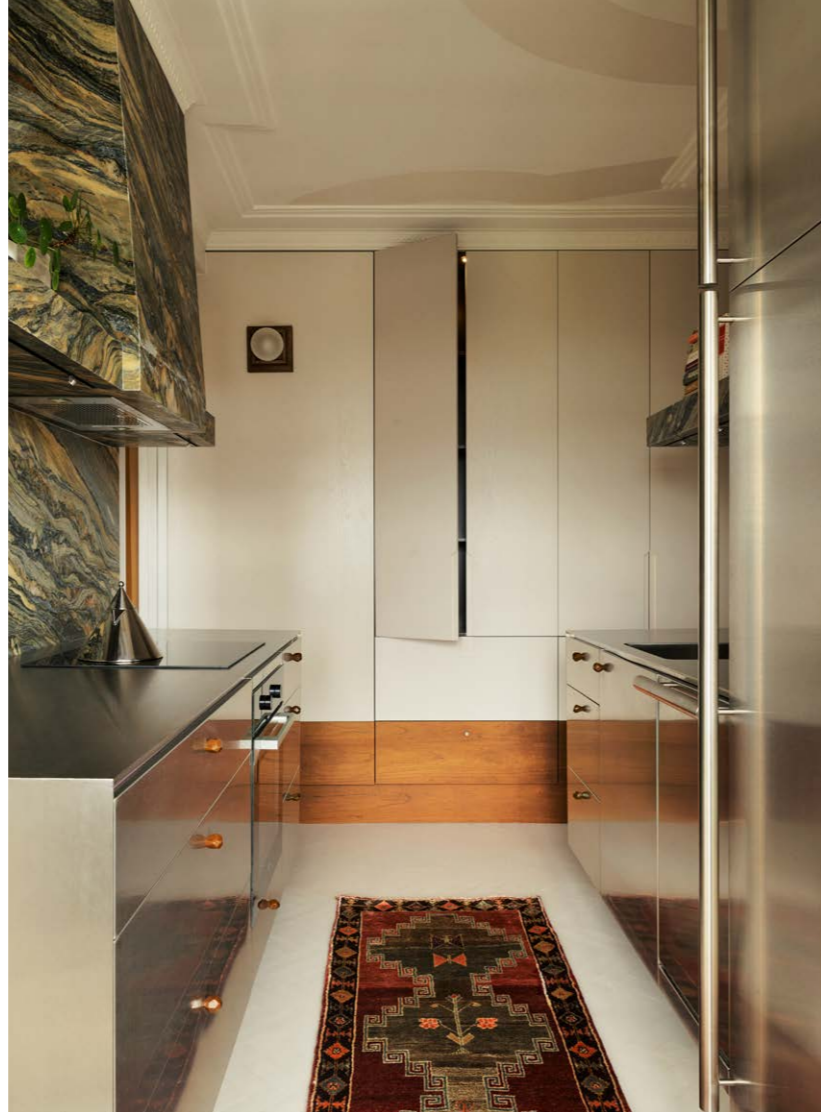
Words **DEBORAH GRANT** Photography **ANSON SMART** Styling **YSG STUDIO**



# TALL ORDER

Opposite page Dark wood panelling appears in all the building's common areas. The original entry was rippled glass, which was reinstated with Flemish glass in a similar amber tone. **This page** In the dining room, the table is a YSG Studio design by Maiden Co. 'Sia' chairs from Cult. Lamp from Tamsin Johnson Showroom. Kooij 'Fresnel' pendant from Origine. Bowl by Sophie Vaidie from Studio Gardner. Artwork by Joel Beerden, clients' own.

This page (clockwise from right and below right) Designed by YSG Studio, the kitchen's stainless-steel joinery and faceted pulls were made by Maiden Co. 'Kintore' knobs in Brushed Nickel from Lo & Co. Lauriana marble from Artedomus. Miele 'PureLine Pyrolytic' oven and induction cooktop from Winnings. 'Halo' pullout mixer from Brodware. 'Beau No 3' sconce from Humanhome. Viabizzuno 'Micromen' joinery light from VBO Australia. 'Persian Shiraz' rug from Cadrys. Alessi 'Il Conico' kettle by Aldo Rossi. 'Red Jug' by Remy Pajaczkowski-Russell. // The main balcony has clear Harbour Bridge and Opera House views. Hay 'Palissade Cone' table in Iron Red from Cult. 'South' armchairs in Red Bordeaux from Living Edge. 'Kairos' carafe and coffee cup in Yellow Topaz by Saardé. **Opposite page** Swirls in a glossy white (Dulux Hog Bristle Half) by Creative Finishes run across the ceilings of the kitchen and living spaces. Outside, the brown planters are from Cranbrook Workshop. Yellow planter by Remy Pajaczkowski-Russell.



A modest 95-square-metre footprint and some compromised ceiling heights were obvious impediments for the new owners of this two-bedroom Art Deco apartment in Sydney's Potts Point. The professional couple, two men who are both more than two metres tall, were quick to approach designer Yasmine Ghoniem, director of YSG Studio, with the task of updating and upscaling it to suit. They were also keen to warm and personalise their home in a scholarly, sophisticated way.

Yasmine's team began by stripping what she politely refers to as a century of "owner interventions" to reinstate clarity and enhance some of the original elements in a more streamlined way. From there, they addressed the issues of light management, storage and contemporary comfort – all within somewhat restrictive heritage conditions. Removing bulky joinery in the hallway (which had contained downlights) and creating a flush floor-to-ceiling solution increased the sense of space and allowed more light to filter through, while raising the heights of the internal doors (along with exaggerating the skirting heights in every space) and painting them white created a smooth passage between rooms for the owners.

In the bathroom, a false ceiling was removed and a wall was partially demolished to create an angled projection in the dining room concealing a washer and dryer plus storage. Additionally, the galley kitchen was opened up with a clever design prioritising light-reflecting stainless steel. Overhead lighting throughout the home was largely eradicated. As no wires could be chased into ceilings or walls, the electricals for the replacement sconces and small amount of downlights were concealed in either the new slim, stepped cornices or skirting.

When it came to the decor, great attention was paid to the interests of the owners, who both love classical music and the calm domestic interiors of Dutch painter Johannes Vermeer. »



« YSG's response was a palette of lead-white-toned walls (Dulux Limed White Quarter) and lime-coated timber floors, along with restful shades of brown: Dulux Desert Boot in the living room and Nomad on the ceiling of the primary suite. (Vermeer's favourite muted colours – yellow and ultramarine blue – appear in some of the upholstery). To ensure the eye always looks up, the team also painted the ceilings of the common areas with note-inspired shapes that read like musical chords, their “glossy magnolia-white swirls adding a gestural breeze across the spaces”.

Timber detailing was another crucial aspect of the scheme. A built-in seat with chamfered details stretching from the hallway around the corner into the dining space has widened the aspect and introduced Art Deco-style comfort on arrival. Nearby is a dining table paying homage to one owner's Bosnian/Croatian ancestry with its glass-topped timber work and cross shapes inspired by geometric design motifs found on traditional woven carpets. More cross motifs are visible on the butterfly pulls of the living room's custom timber credenza. Meanwhile, Art Deco diamond shapes imprint the edges of the new cornices.

In the kitchen, smooth stretches of American oak balance the stainless steel (in the joinery and pulls) as the splashback's Lauriana quartzite and runner bring bolder colour. Moodier stone was reserved for the ensuite off the main bedroom, and more pattern gently included in the bedding and blinds.

The challenges of this project mostly centred around the 70cm-wide door of the old lift, which meant the majority of new furniture was carted up several floors or assembled from parts on site. Highlights, however, are many, says Yasmine, from the kitchen, “like a large abstract painting to enjoy when walking towards the lounge,” to the “special moments” in each room, from the entry's crackled glass sconce with its glowing intensity to the angled halo light hovering above the dining table. She also cites the joy of working with clients from varied ethnic backgrounds. “Subtly uncovering the intricacies of their heritage to express them uniquely has become the core essence of our studio's design process. So, subliminally scattering references to one of the homeowner's ancestral ties was super special.” **15** *ysg.studio and @ysg.studio*

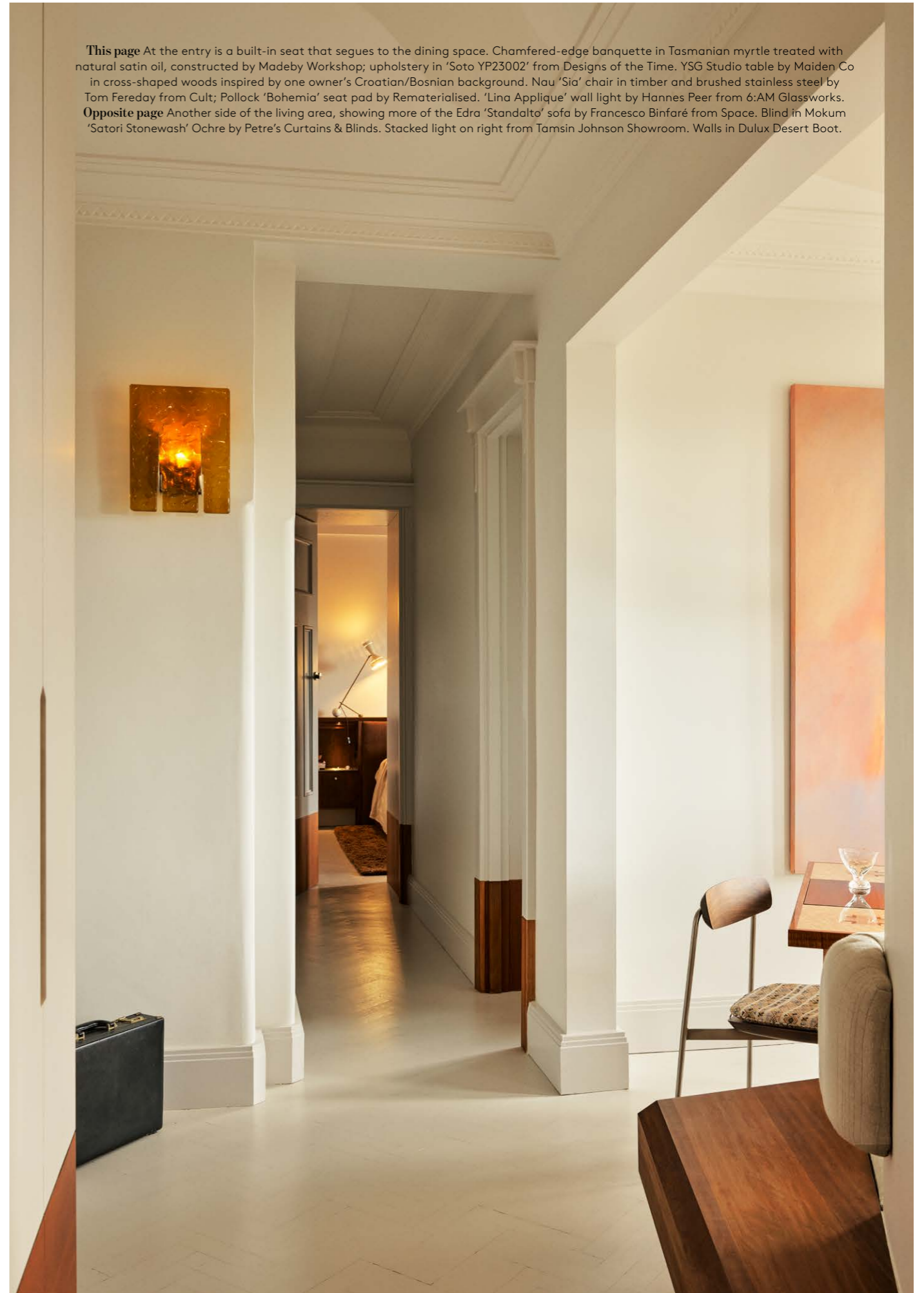
These pages In the new height-enhanced living area, the joinery and pulls are Tasmanian myrtle by Madeby Workshop. Viabizzuno 'Tessera' wall light from VBO Australia. Custom USM sideboard from Anibou. Vintage side table from 1st Dibs. Edra 'Standalto' sofa from Space. &Tradition 'Wulff' armchair from Cult. 'Mawu' chair by Laura Gonzalez in 'Petrushka' Starry Night fabric by Jim Thompson. Vintage lamp from Tamsin Johnson Showroom. Cassina '10 Table En Tube Basse' coffee table from Mobilia. 'Red Basin' bowl and planter by Remy Pajaczkowski-Russell. Vase by Timna Taylor from The DEA Store. Custom YSG rug by Tappeti. Beogram record player from Bang & Olufsen. Artworks by Yvette Coppersmith from Sullivan + Strumpf and Laura Jones from Chalk Horse. 'Beau No3' wall sconce in next room from Humanhome.





**This page** At the entry is a built-in seat that segues to the dining space. Chamfered-edge banquette in Tasmanian myrtle treated with natural satin oil, constructed by Madeby Workshop; upholstery in 'Soto YP23002' from Designs of the Time. YSG Studio table by Maiden Co in cross-shaped woods inspired by one owner's Croatian/Bosnian background. Nau 'Sia' chair in timber and brushed stainless steel by Tom Fereday from Cult; Pollock 'Bohemia' seat pad by Rematerialised. 'Lina Applique' wall light by Hannes Peer from 6:AM Glasworks.

**Opposite page** Another side of the living area, showing more of the Edra 'Standalto' sofa by Francesco Binfaré from Space. Blind in Mokum 'Satori Stonewash' Ochre by Petre's Curtains & Blinds. Stacked light on right from Tamsin Johnson Showroom. Walls in Dulux Desert Boot.



**SPEED READ**

» In 2025, YSG Studio undertook the renovation of an Art Deco apartment in Sydney's Potts Point.  
 » In their brief, the owners, who are both quite tall, requested adjustments to the internal dimensions, including door heights, in the framework of a scheme that complemented the 100-year-old building.  
 » What has resulted is a design that is contemporary and comfortable and pays homage to the owners' interests and origins – a YSG Studio specialty.



These pages (from top right) The new glass panels in the bathroom add a sepia richness and tonally match the entry. Momentti Solaro terrazzo tiles from Onsite Supply & Design. Custom basin (in Crema Khrusos marble from Mediterranean Marble & Granite) and mirror by YSG Studio. Nickel mixer from Astra Walker. 'Linear' towel hook from Lo & Co. Bocci '14s' wall lights by Omer Arbel from Space. // A lead-white tone on the walls complements the main bedroom's lime-coated herringbone timber floors. Bedhead by Madeby Workshop. Lamp from Tamsin Johnson Showroom. 'Repose' linen bedcover from Cultiver. 'Kuba Cloth 010' throw from Pan After. Bolsters and cushions by Rematerialised. Blinds in 'Fairuza Flatweave' Spice 81990 from Schumacher by Petre's Curtains & Blinds. Custom YSG rug by Tappeti.



**SIGNATURE STYLE  
KEY PIECES**

1 Velvet fringed lumbar cushion in Nutmeg, \$129, Saardé. 2 Alessi 'Il Conico' stainless-steel kettle, \$426, Farfetch. 3 Kas 'Kiki' glass vase in Lime, \$149, Domayne. 4 Lee Broom 'Solstice' wall light in Brushed Brass, \$1850, Space. 5 Charles Wilson 'Zaza' Preston velvet armchair in Platypus, from \$2876, King Living.